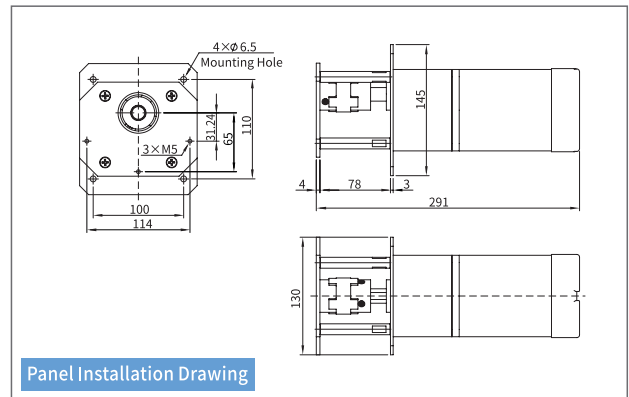
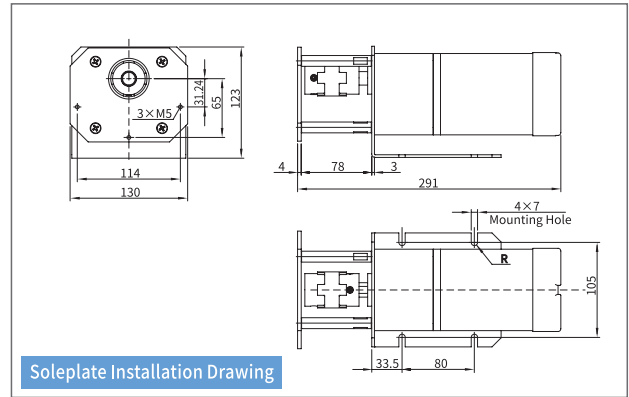
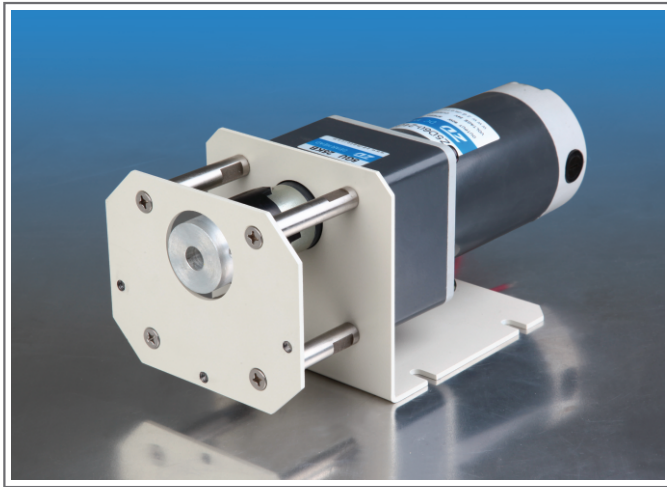


# OEM Fixed Speed Peristaltic Pump

Max. Flow Rate



## 90-2 Series



### Pump Head Options



OEM PERISTALTIC PUMP

Model	Installation Mode	Product Code	Speed (rpm)	Motor	Power Supply	Speed Tolerance	Motor Life	Operating Temperature	Relative Humidity			
G240-D7	Soleplate Panel	05.51.423	240	90 DC gear motor	DC 12V/90W	$\leq \pm 10\%$	2000 hours	0 to 40°C	< 80%			
G240-D8	Panel	05.51.424	240									
G333-D7	Soleplate Panel	05.51.523	333									
G333-D8	Panel	05.51.524	333									
G440-D7	Soleplate Panel	05.51.611	440									
G440-D8	Panel	05.51.612	440									
G500-D7	Soleplate Panel	05.51.713	500									
G500-D8	Panel	05.51.714	500									
G208-D107	Soleplate Panel	05.53.431	208		90 AC gear motor		AC 220V/90W			5000 hours		
G208-D108	Panel	05.53.432	208									
G288-D107	Soleplate Panel	05.53.441	288									
G288-D108	Panel	05.53.442	288									
G346-D107	Soleplate Panel	05.53.531	346									
G346-D108	Panel	05.53.532	346									
G466-D107	Soleplate Panel	05.53.611	466									
G466-D108	Panel	05.53.612	466									
G166-A7	Soleplate Panel	05.55.321	166									
G166-A8	Panel	05.55.322	166									
G250-A7	Soleplate Panel	05.55.433	250									
G250-A8	Panel	05.55.434	250									
G347-A7	Soleplate Panel	05.55.523	347									
G347-A8	Panel	05.55.524	347									
G417-A7	Soleplate Panel	05.55.613	417									
G417-A8	Panel	05.55.614	417									

Power Supply	DC 12V				DC 24V				AC 220V			
Speed(rpm)	240	333	440	500	208	208	346	466	166	250	347	417
Tubing	Flow Rate(mL/min)											
73"	2400	3330	4400	5000	2080	2080	3460	4660	1660	2500	3470	4170
82"	4400	6105	8067	9167	3813	3813	6343	8543	3043	4583	6362	7645