

# Hemodialysis Pump

## MTH18-12

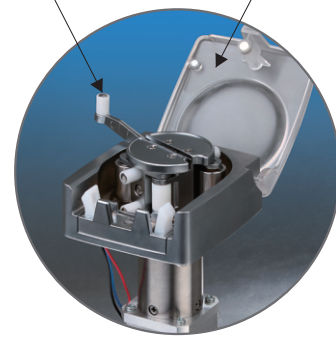
HEMODIALYSIS PUMP



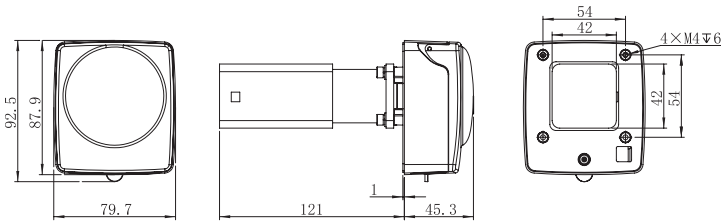
- Mainly used in hemodialysis applications.
- DC brushless motor, more stable, low noise.
- Small size, compact structure, ideal for OEM equipment and instruments.
- Brushless motor drive board (model:BLDCDRV-B1) is available. Or work with customer's specific drive board.

The lever of the rotor assembly helps to load the tubing easily and run the pump head manually.

The tubing and pump running condition can be easily monitored through the transparent PC cover. Cover open to stop to protect the operator and monitor pump status.



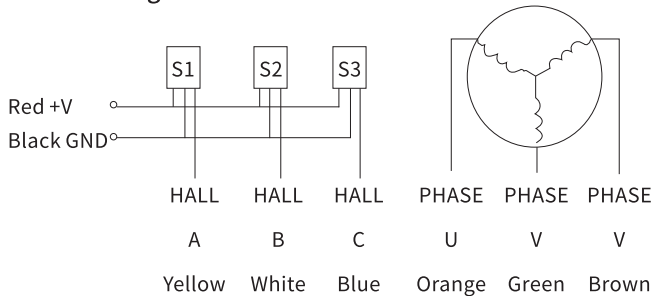
### Installation Drawing



### Motor Specification

Voltage rating	24VDC
Current rating	3.2A
Pole-pairs number	4
Speed rating	4000rpm
Reduction ratio	1:19

### Motor Wiring



### Pump Specification

Speed	0-70rpm, CW/CCW
Tubing	OD≤10mm, Wall thickness1.75±0.2mm
Flow rate	5-300mL/min(6.5mmID×10mmOD) 2-165mL/min(4.6mmID×8.4mmOD)
Dimension(L×W×H)	166×80×93mm
Relative humidity	<80%
Operating temperature	0 to 40°C
Weight	1.23kg

Model	Product Code	Roller Number	Roller Material	Housing and Cover Material	Speed (rpm)	Tubing ID×OD(mm)	Flow Rate (Only for reference)
MTH18-12	05.21.01A	2	304SS	Housing; Zinc Alloy /Chrome Coating Cover: PC	≤70rpm	6.5×10	5-300
						4.6×8.4	2-165