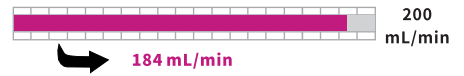
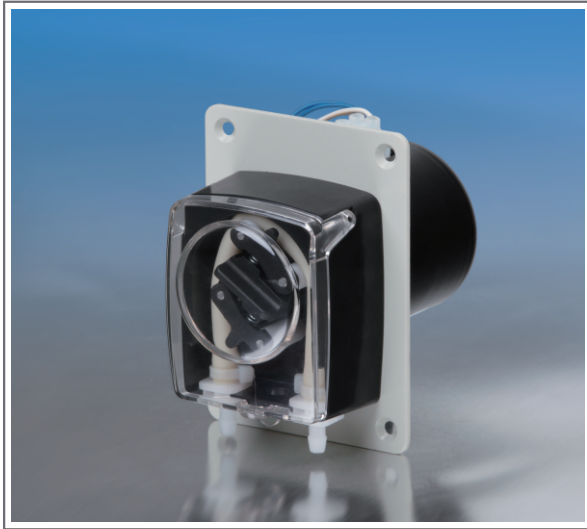


OEM Fixed Speed Peristaltic Pump

Max. Flow Rate



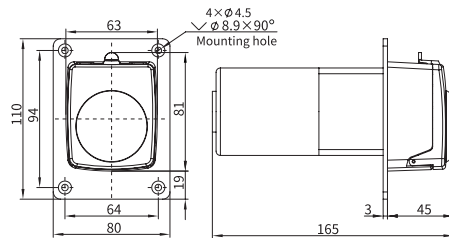
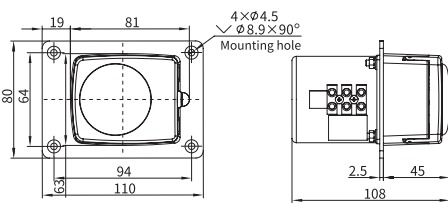
TH15 Series



AC Synchronous Motor Outline Drawing



DC/AC Motor Outline Drawing



OEM PERISTALTIC PUMP

Model	Installation Mode	Product Code	Speed (rpm)	Motor	Power Supply	Speed Tolerance	Motor Life	Operating Temperature	Relative Humidity
G14-D2&TH15	Panel	05.52.01A	14	60 DC gear motor	DC 12V/15W	≤ ±10%	2000 hours	0 to 40°C	< 80%
G28-D2&TH15		05.52.02A	28						
G56-D2&TH15		05.52.03A	56						
G93-D2&TH15		05.52.04A	93						
G15-D102&TH15		05.54.01A	15						
G30-D102&TH15		05.54.02A	30						
G57-D102&TH15		05.54.03A	57	60 AC gear motor	AC 220V/10W		5000 hours		
G98-D102&TH15		05.54.04A	98						
G15-A2&TH15		05.56.21A	15						
G30-A2&TH15		05.56.22A	30						
G60-A2&TH15		05.56.23A	60						
G100-A2&TH15		05.56.24A	100						
G5-A102&TH15		05.56.01A	5	60 AC synchronous motor	AC 220V/14W		1500 hours		
G15-A102&TH15		05.56.02A	15						
G30-A102&TH15		05.56.03A	30						
G50-A102&TH15		05.56.04A	50						
G60-A102&TH15		05.56.05A	60						
G110-A102&TH15		05.56.11A	110						

Motor	DC Gear Motor								AC Gear Motor				AC synchronous Gear Motor					
Power Supply	DC 12V				DC 24V				AC 220V									
Speed(rpm)	14	28	56	93	15	30	57	98	15	30	60	100	5	15	30	50	60	110
Tubing	Flow Rate(mL/min)																	
13"	1	2	4	7	1	2	4	7	1	2	4	7	0	1	2	4	4	8
14"	3	6	12	20	3	7	13	22	3	7	14	22	1	3	7	11	13	24
19"	7	14	28	47	8	15	30	49	8	15	31	50	3	8	15	25	30	55
16"	11	22	45	74	12	24	47	78	12	24	50	80	4	12	24	40	48	88
25"	23	47	94	155	25	50	99	164	25	50	104	167	8	25	50	84	100	184