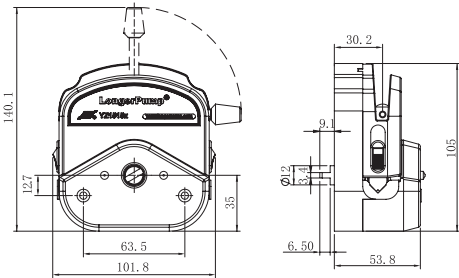


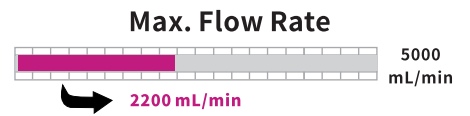
YZ Pump Head

YZ1515x, YZ2515x

Classic design, simple operation, wide flow range.



PPS housing
(Excellent chemical resistance)



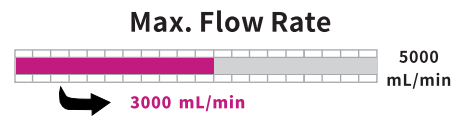
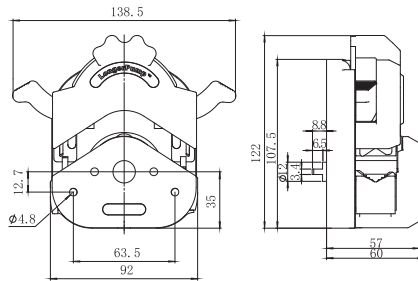
PESU

PUMP HEADS

YZII15, YZII25

Patented Design
Patent Number: 200620026529.1

Based on the classic design of YZ1515x/YZ2515x, YZII15/YZII25 have a special tubing retention linkage which makes tubing loading easy and rapid. YZII25 accepts more tubing sizes than YZ2515x and provides a wider flow range.



PESU

Tubing Loading Comparison



Tubing clamber needs to be lifted manually
YZ1515x/YZ2515x



Tubing clamber can be automatically opened
YZII15/YZII25

Model	Product Code	Roller Number	Roller Material	Housing Material	Speed (rpm)	Tubing	Max. Flow Rate (mL/min)	Weight (kg)
YZ1515x-A	05.01.52A	3	Stainless steel	PESU	≤600	13" 14" 19" 16" 25" 17" 18"	2200	0.4
YZ1515x-B	05.01.52B	6		PESU			1450	
YZ1515x-C	05.01.52C	3		PPS		2200		
YZ1515x-D	05.01.52D	6		PPS		1450		
YZ2515x-A	05.01.53A	3	Stainless steel	PESU	≤600	15" 24"	1600	0.35
YZ2515x-C	05.01.53C			PPS			1600	
YZII15	05.01.55A	3	Stainless steel	PESU	≤600	13" 14" 19" 16" 25" 17" 18"	2200	0.35
YZII25	05.01.56A						3000	