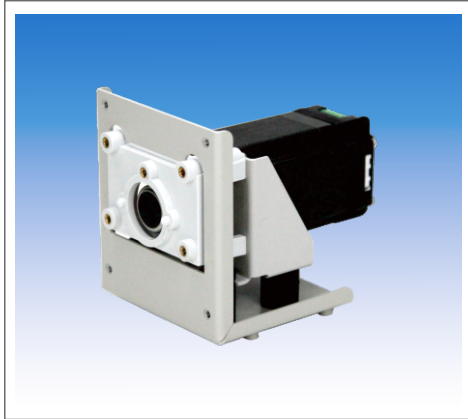
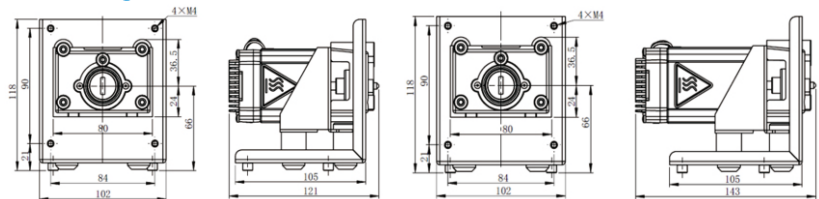


OEM Variable Speed Peristaltic Pump

SE02 Series with Integrated Driver



- Compact size and structure, utilizing a NEMA 23 stepper motor with an integrated driver
- Control the pump through digital signals, analog signals and pulse signals.
- Compatible with various peristaltic pump heads with a wide flow range.



T100

T300/T600

	T100-SE02-01	T300-SE02-01	T600-SE02-01
Pump Speed	0-100rpm	0-300rpm	0-600rpm
Speed resolution	0.1rpm	1rpm	1rpm
Running direction control	Pump running direction is controlled by a switch signal (dry contact signal). The trigger mode can be configured via communication commands to either level trigger or pulse trigger. Factory default setting: level trigger mode, contact open for clockwise, contact closed for counterclockwise.		
Start/stop control	Start/stop is controlled by a switch signal (dry contact signal). The trigger mode can be configured via communication commands to either level trigger or pulse trigger. Factory default setting: level trigger mode, contact open for start, contact closed for stop.		
DIP switch setting for pump speed	The DIP switch can set the pump speed to 0-100rpm, and each DIP position corresponds to a step of 5rpm.	The DIP switch can set the pump speed to 0-300rpm, and each DIP position corresponds to a step of 10rpm.	The DIP switch can set the pump speed to 0-600rpm, and each DIP position corresponds to a step of 20rpm.
External signal for pump speed	The pump speed will be proportional to the external speed signal: 4-20mA, 0-5V, 0-10V, 0-10kHz. The relationship between the signal range and speed range can be configured through communication commands.		
Output	DC5V 100mA		
Power supply	DC24V/15W	DC24V/45W	DC24V/55W
Dimensions(L*W*H)	121*102*118mm	143*102*118mm	
Mounting method	Panel mount or soleplate mount		
Working condition	Temperature: 0°C-40°C, relative humidity < 80%		
Weight(without pump head)	1.29kg	1.61kg	

Pump Head	Tubings	Max Flow Rate(mL/min) T100-SE02-01	Max Flow Rate(mL/min) T300-SE02-01	Max Flow Rate(mL/min) T600-SE02-01
YZ1515X,YZ1115	13#,14#,19#,16#,25#,17#,18#	380	1100	2200
YZ2515X	15#,24#	270	800	1600
YZ1125	15#,24#,35#,36#	500	1500	3000
FG15-13	13#,14#,19#,16#,25#,17#,18#	430	1200	2400
FG25-13	15#,24#	320	1100	2200
DMD15-13-B DMD15-13-D	2x13#,2x14#,2x19#,2x16#,2x25#	375	1035	2070
BZ15-13-A	14#	22	75	150
BZ15-13-B	16#	80	230	460
BZ15-14-C	25#	150	480	960
BZ15-14-D	17#	270	800	1600
BZ25-13-B	24#	250	800	1600
DG15-24	16#,25#,17#	300(Single Channel)	900(Single Channel)	1800(Single Channel)
DG15-28	13#,14# ID≤3.17mm W.T. 0.8-1mm	75(Single Channel)	Not Recommended	Not Recommended
DG-(1,2,4,6,8) 6 rollers	ID≤3.17mm W.T. 0.8-1mm	48(Single Channel)	Not Recommended	Not Recommended
DG-(1,2,4) 10 rollers	ID≤3.17mm W.T. 0.8-1mm	32(Single Channel)	Not Recommended	Not Recommended
BPH01	13#, 14#, 19#, 16#, 25#	82	260	530